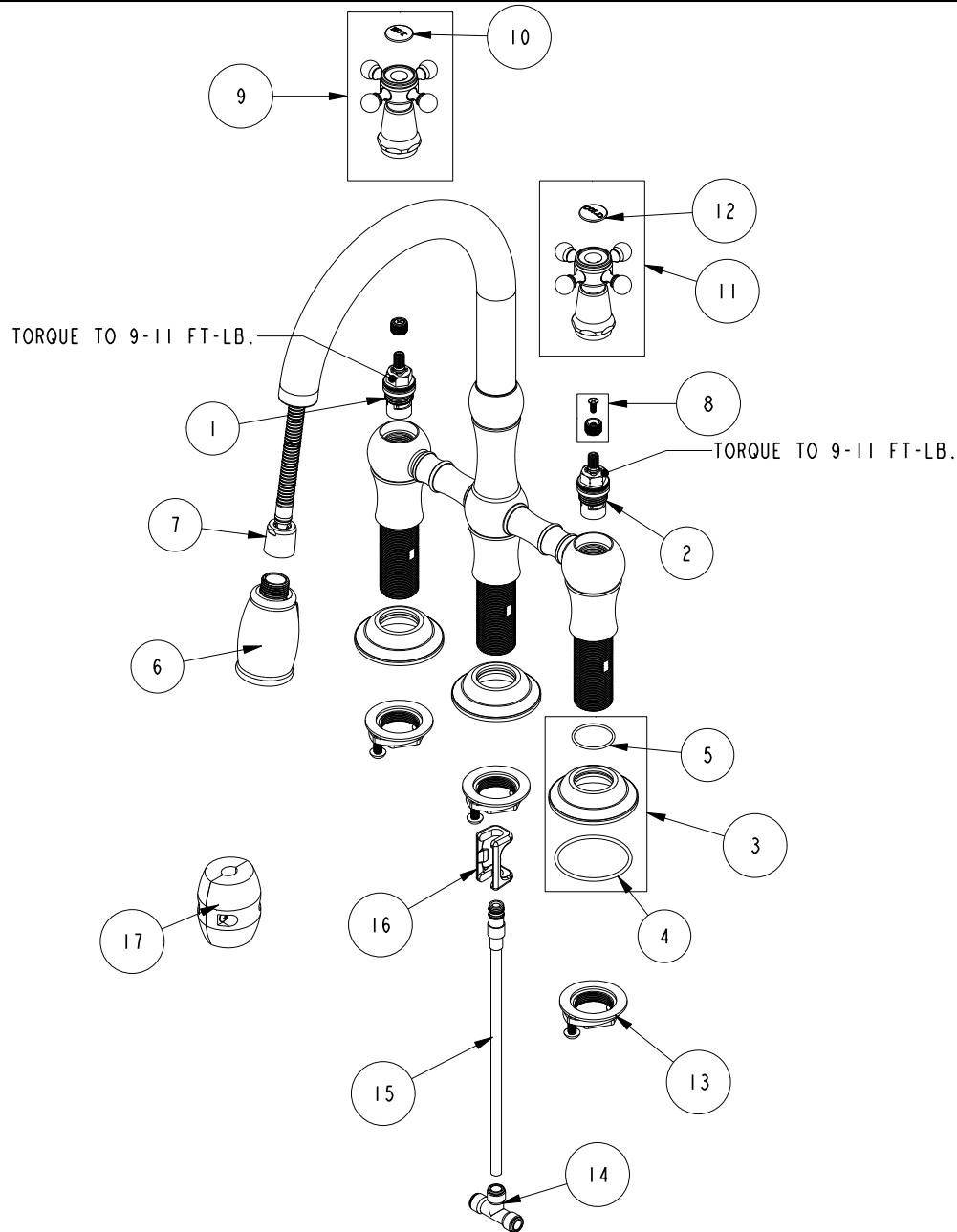


REPLACEMENT PARTS



ITEM	PT/ASSY	SPECIFY FINISH	DESCRIPTION
1	1-006		C/S VALVE CARTRIDGE - HOT
2	1-005		C/S VALVE CARTRIDGE - COLD
3	20-657	YES	ESCUTCHEON ASSEMBLY
4	91752		O-RING, #2- 137, EPDM, 50 DURO
5	91144		O-RING, #2-024, EPDM, 65-75 DURO
6	3-417	YES	SPRAY HEAD, JACOBAN
7	11877		HOSE, PULLDOWN SWIVEL
8	10-305		CARTRIDGE STEM ADAPTER KIT
9	20-780	YES	HANDLE ASSEMBLY (HOT)
10	1-108		HOT BUTTON ASSEMBLY W/ ADHESIVE
11	20-779	YES	HANDLE ASSEMBLY (COLD)
12	1-107		COLD BUTTON ASSEMBLY W/ ADHESIVE
13	1-393		1-1/8 18 UNEF MOUNTING KIT
14	92934		5/16" TUBE TEE CONNECTOR
15	1-474		PEX PULLDOWN CONNECTOR
16	91568		RETAINER CLIP
17	1-286		WEIGHT ASM

TWO-HANDLE BRIDGE FAUCET WITH PULL-DOWN
1030-5462

REV B EN-4750 12/11/23 APPROVED RS

NEWPORT BRASS.

t: 949.417.5207 | www.newportbrass.com